

# THE NEW CENTRE OF EUROPE



RIGA WATERFRONT  
LATVIA







# *A MAN WITH A VISION*

"As we embark on this journey, our vision is to preserve the city's heritage in every aspect of our projects, while embracing the future in crafting luxury lifestyle experiences, uplifting the cityscape, and integrating smart innovation for sustainable communities that promote the growth of the local economy".

– MR. ALABBAR





# *ABOUT THE DEVELOPER*

Mr. Alabbar's renowned developments have been revered across 16 different countries over 30 years & are known for being meticulously planned master communities that contribute to improving lifestyle and quality by bringing the most incredible designers and architects to deliver world-class communities.

**Some of his most notable achievements include:**



## **Burj Khalifa**

the tallest building in the world with 205 floors.

## **Downtown Dubai**

with over 1,800 retail stores, 35,000 homes & a population of 90,000 residents.

## **Dubai Mall**

Downtown Dubai is the most visited location destination with over 100 million visitors a year worldwide with its most high-end luxurious brands internationally, F&B and its entertainment division.

## **Over 70 Hotels & Resorts**

chains in the UAE and internationally (St Regis, Mandarin Oriental, Fairmont, Address, The Bristol, Bluesun, Palace, Locanda, Armani, W Hotel, VIDA, ROVE & Emaar Leisure Group).





*OUR VISION*

*01*





# THE NEW CENTRE OF EUROPE

---

Eagle Hills introduces its waterfront development in Riga, Latvia, seamlessly blending historical grandeur with contemporary living to redefine city living.



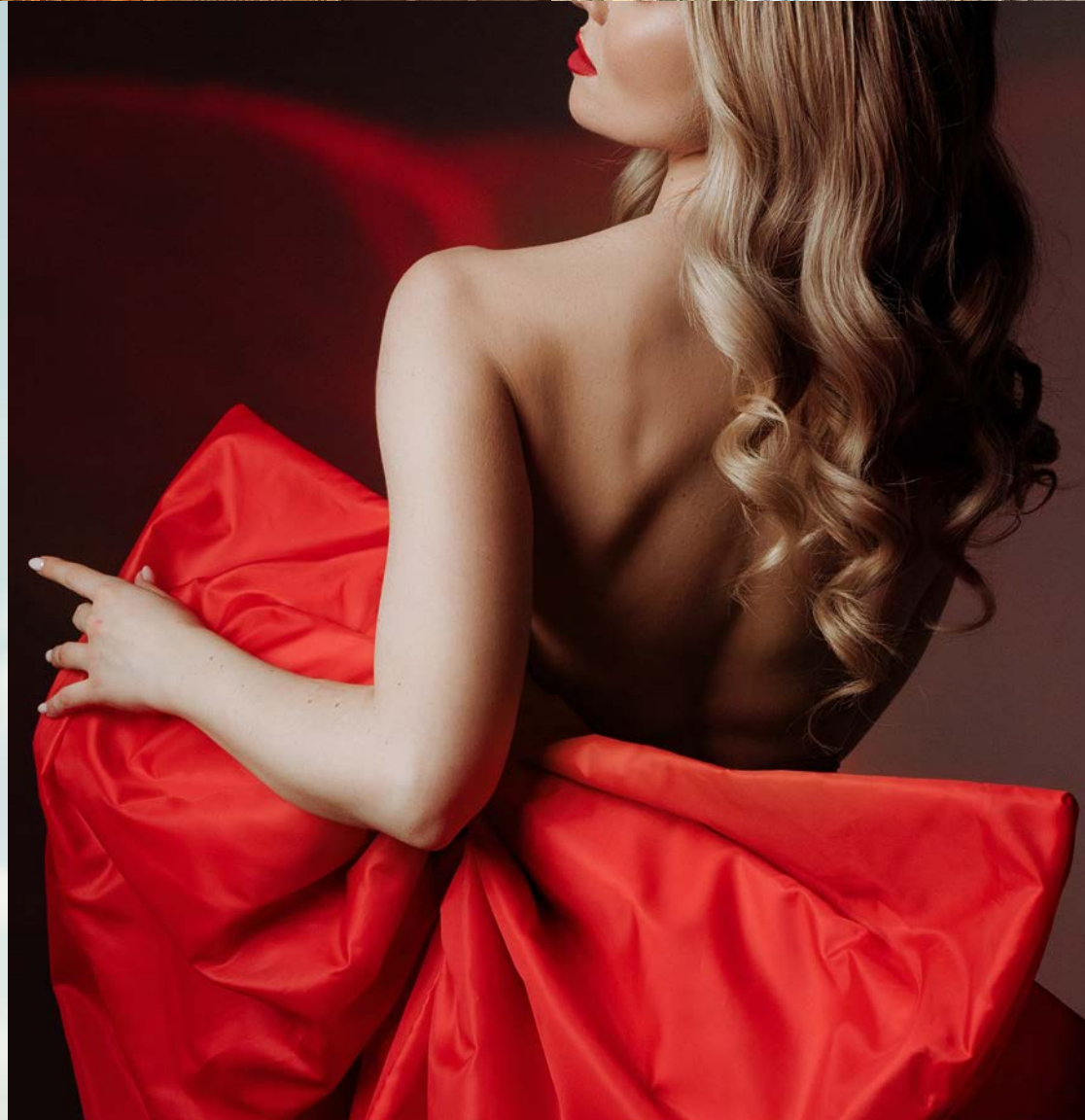


# BLENDING AUTHENTICITY **WITH THE FUTURE**

As we begin, our vision is to honor the city's heritage in our project while crafting luxury lifestyle experiences, enhancing the cityscape, and fostering sustainable communities for local economic growth.









# *OUR VALUES*

# 02





# AUTHENTICITY & *CRAFT*

We celebrate authenticity, craftsmanship,  
tradition, and precision in our projects, resonating  
with all who encounter them.





# SMART CITY & *TECH*

Experience seamless, sustainable urban  
living in our smart city infrastructure.





# *SUSTAINABILITY*

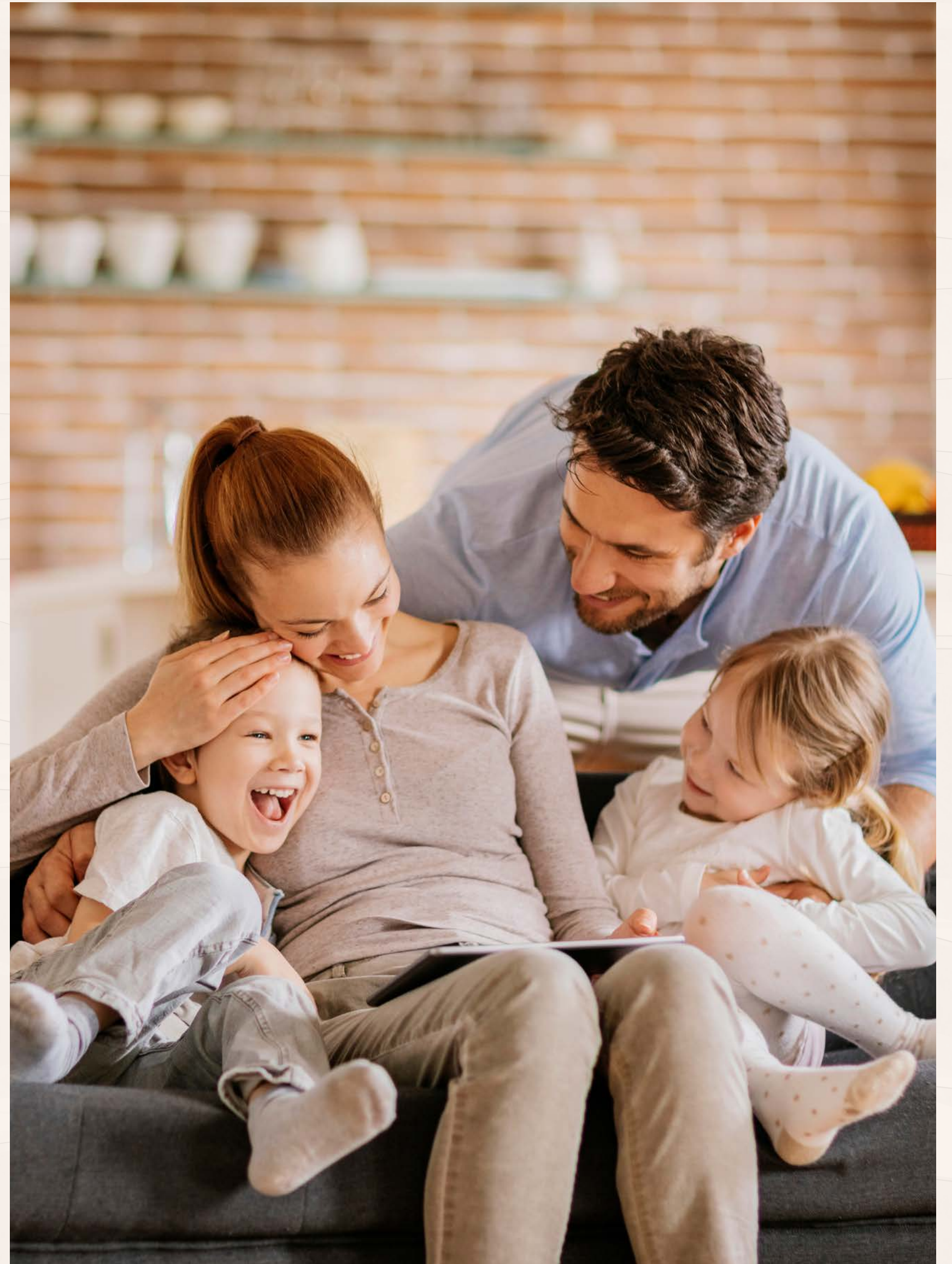
We prioritize eco-consciousness, using sustainable materials and energy-efficient systems to make a lasting positive impact on the environment.





# *SECURITY*

Our community prioritizes security, blending skilled personnel and technology for resident confidence in our waterfront enclave.





*ABOUT RIGA  
WATERFRONT*

03





# ABOUT RIGA WATERFRONT

---

Experience prime waterfront living next to a UNESCO World Heritage site. Experience Riga Waterfront, integrating homes, retail and real comfort.









# CITY CENTRE CONVENIENCE





# BUILT ON HERITAGE

---





# VIBRANT LIFESTYLE

---













# LIVING WITH NATURE

---









# WATERFRONT SERENITY

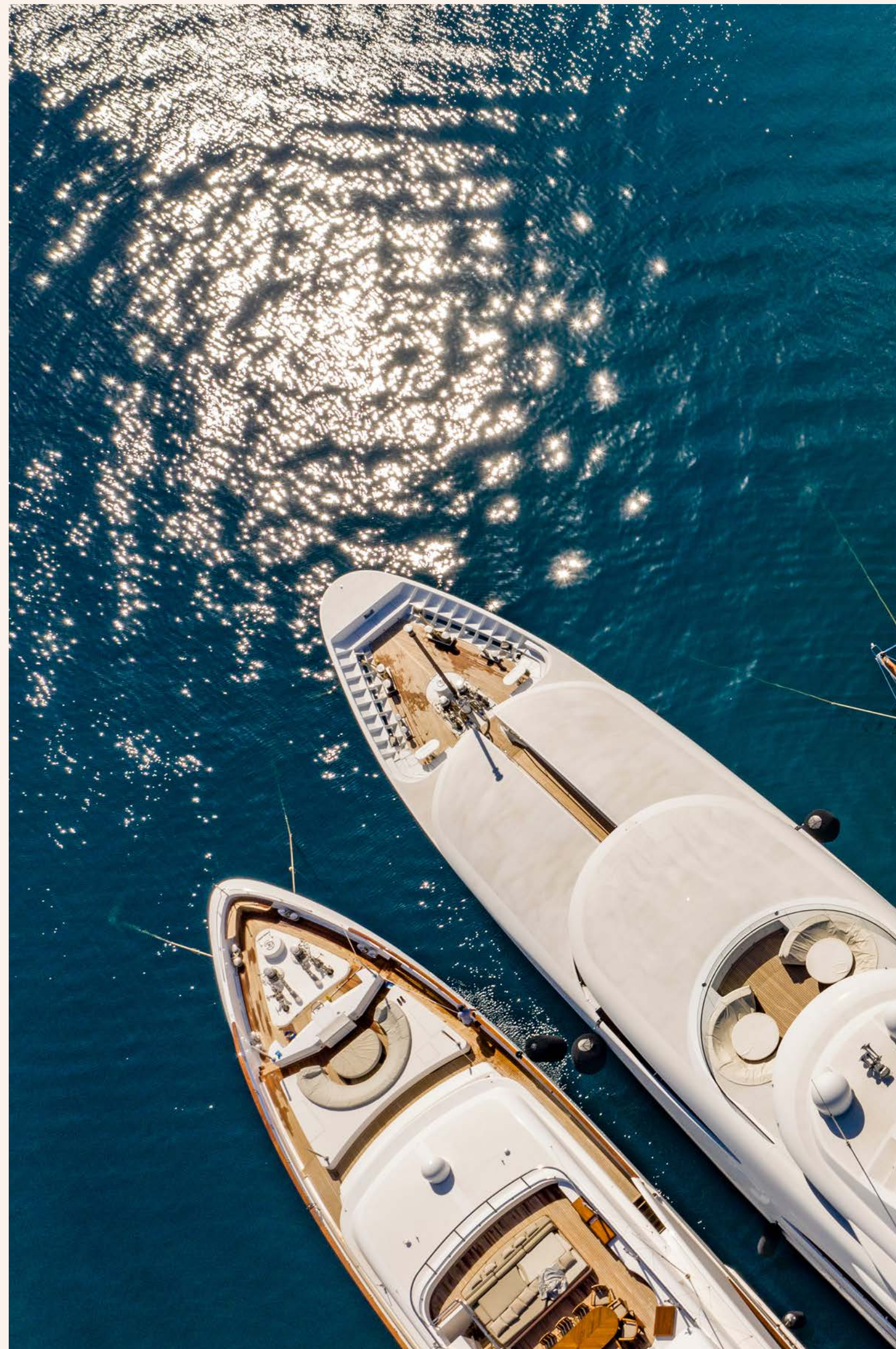
---





*WORLD-CLASS  
MARINA*

*04*





# WORLD-CLASS MARINA

---



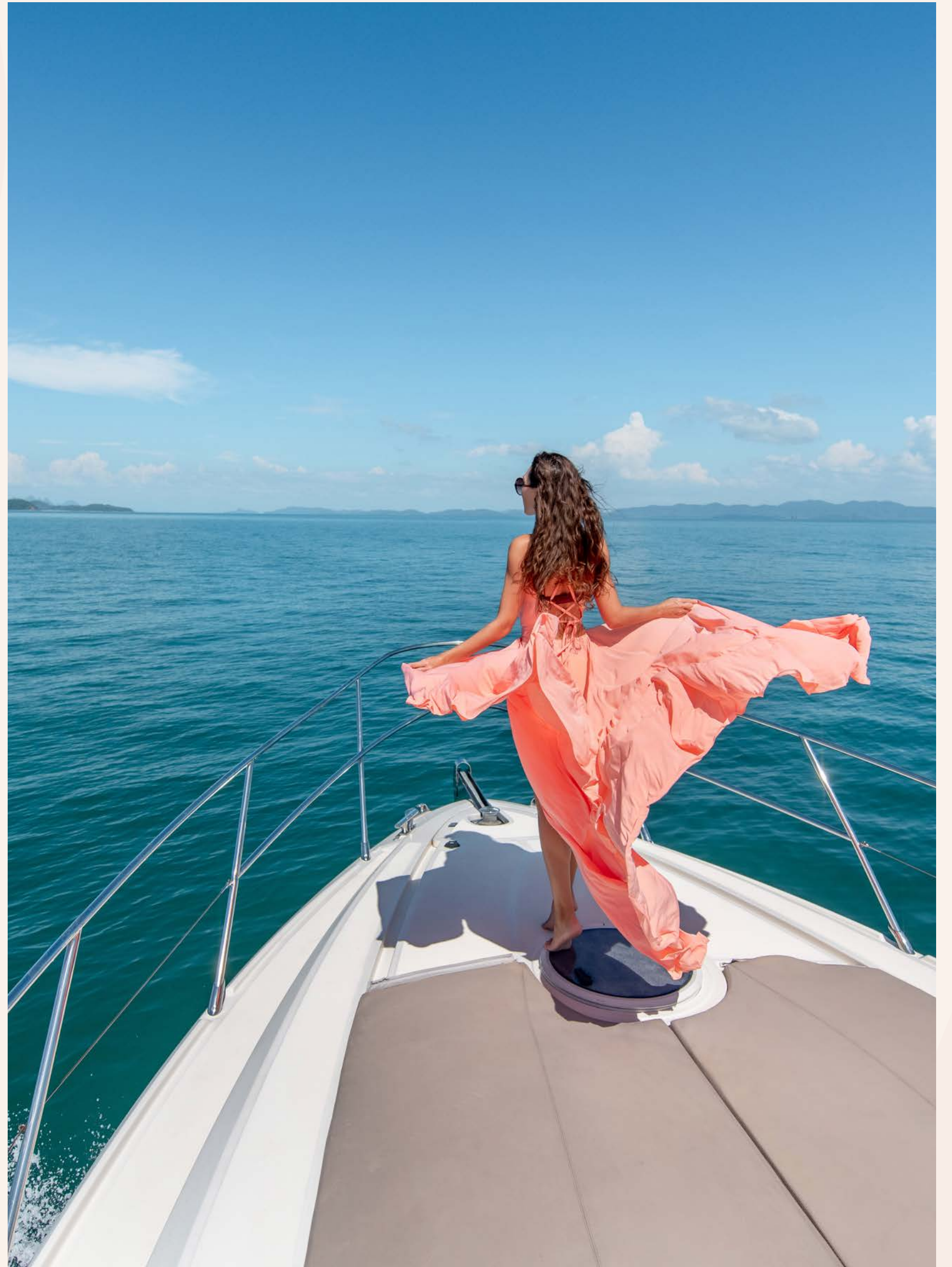






# *FLOATING PAVILIONS*

# 05





# FLOATING PAVILIONS





*PREMIUM  
HOTELS*

06





# PREMIUM HOTELS

---





*RESTAURANTS  
& BARS*

07





# WATERFRONT DINING EXPERIENCES

An architectural rendering of a vibrant waterfront dining and promenade area. On the left, a modern multi-story building with a facade of vertical wooden slats and large glass windows houses a cafe. The cafe's outdoor seating area, featuring round tables and dark wicker chairs, is partially covered by a white awning. People are shown sitting at the tables, some looking out at the water. Above the cafe, the building has several balconies with glass railings, some of which have small plants and people on them. A wide, paved promenade runs along the water's edge. In the center, a woman in a grey blazer and white skirt walks a black dog. To the right, a wooden deck area serves as a gathering spot where people are sitting on the ground, talking, or looking at a sailboat docked nearby. A large, leafy tree stands on the right side of the promenade. In the background, a red construction crane is visible, and a cable-stayed bridge spans the water. The sky is a clear, bright blue with a few wispy clouds.



*LUXURY  
SHOPPING*

08





# FASHION HUB

---







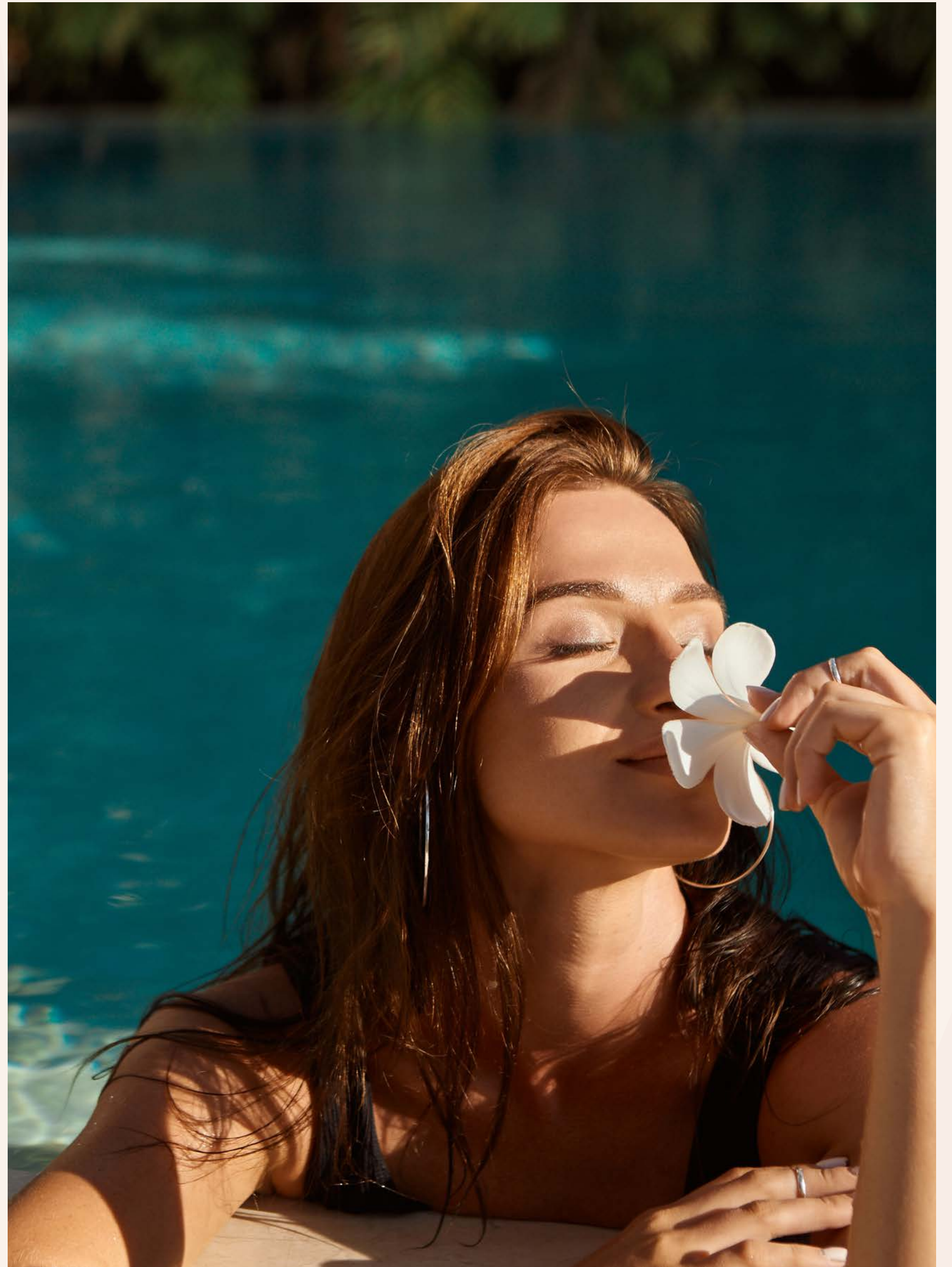
Riga Waterfront offers diverse shopping, from high-end boutiques to popular brand outlets, for residents and visitors alike.





*EXCLUSIVE AMENITIES*

09





# URBAN BEACH





# EDUCATIONAL FACILITIES

---





# ART & ENTERTAINMENT

---









# WELLNESS & SPA

---









# OFFICE SPACES

---





# RIGA WATERFRONT *OVERVIEW*



CITY CENTER  
CONVENIENCE



LUXURY  
RESIDENTIALS



HISTORY &  
ARCHITECTURE



WATERFRONT  
PROMENADE



WORLD- CLASS  
MARINA



RESTAURANTS &  
BARS



LUXURY SHOPPING



LUXURY HOTELS



YACHT CLUB



ART & ENTERTANMENT



MUSEUM



URBAN BEACH



SMART CITY &  
TECHNOLOGY



SECURITY &  
SUSTAINABILTY



EXCLUSIVE  
AMENITIES



# EAGLE HILLS

[rigawaterfront.com](http://rigawaterfront.com)

